

# LESS LAWN MORE OPPORTUNITY

## Lawn Alternative Quick Reference Guide

California law (AB 1572) will soon prohibit the use of potable (drinking) water to irrigate nonfunctional lawn on most commercial, industrial, and institutional (CII) properties—including common areas managed by homeowner associations (HOAs).

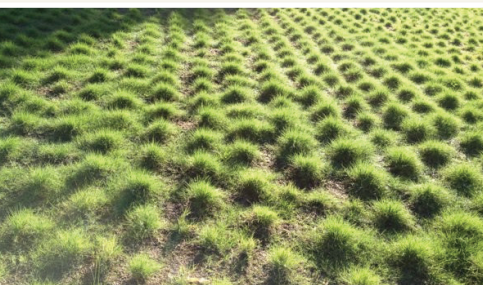


Lavender *Lavandula* spp.

## Lawn Alternatives

### Compliance Made Beautiful: Water-Wise Landscapes for Every Client

New regulations mean your customers can face fines and enforcement actions if they keep non-compliant lawns. By helping them replace grass with vibrant, water-wise landscapes, you not only keep them in compliance but also create outdoor spaces that thrive in California's climate and attract wildlife. This guide showcases a range of inspiring design ideas to help you transform lawns with vibrant, water-wise plants.



UC Verde Buffalograss

#### LAWN LOOKALIKE

For clients who want the look of a lawn while complying with the regulation. Ground-cover plants can mimic the look and feel of a traditional lawn while using less water and requiring less maintenance. These options are ideal for open areas or frontages where a traditional look matters.

**Plant species include:** *Creeping Red Fescue, Kurapia, Silver Carpet, Tall Fescue, UC Verde Buffalograss*



Douglas Iris

#### WATER-WISE RETREAT

A shaded space filled with low-light, drought-tolerant plants is a smart way to save water while creating a cool, relaxing retreat. These landscapes are perfect for courtyards, entryways, or quiet corners near buildings.

**Plant species include:** *Common Yarrow, Coyote Mint, Douglas Iris, Red Flowering Currant*



California Lilac

#### NECTAR NOOK

Sunny areas are ideal for drought-tolerant native flowers that not only thrive with minimal water but also provide vital habitat and nourishment for pollinators and birds. These landscapes look stunning, require less water, and actively support California's native species.

**Plant species include:** *Blue Grama, California Lilac, Deer Grass, Desertbells, Hummingbird Sage, Purple Clarkia, Toyon, White Sage*



Bigberry Manzanita

## LIVING PRIVACY SCREEN

Native shrubs offer a water-wise, habitat-friendly alternative to traditional fencing—adding privacy while supporting local wildlife. Use these in place of fences or walls in property perimeters, between buildings, or in parking lot buffers.

**Plant species include:** *Bigberry Manzanita*, *Deer Grass*, *Toyon*



## SLIM SPACES

Even the narrowest strips—like curbsides and medians—can be transformed with hardy native grasses and colorful annual blooms, turning overlooked spaces into thriving, water-wise landscapes.

**Plant species include:** *Blue Grama*, *California Poppy*, *Purple Clarkia*

### Your Water Provider Is Here to Help

Many water providers offer lawn transformation rebates with specific plant requirements. Be sure to check with your local water provider for information before starting your project.

## Water-Wise Plant Resources

These resources offer databases of water-wise plants that are best for your project, care instructions, and inspiration for your next lawn transformation.

- Bloom! California  
[bloomcalifornia.org](https://bloomcalifornia.org)
- California Native Plant Society  
[cnps.org/gardening](https://cnps.org/gardening)
- Calscape  
[calscape.org](https://calscape.org)
- Future Favorites: Climate-Ready Plants from UC Davis Arboretum and Public Garden  
[arboretum.ucdavis.edu/future-favorites-climate-ready-plants](https://arboretum.ucdavis.edu/future-favorites-climate-ready-plants)
- Southern California Native Plant Guide:  
[bewaterwise.com/california-native-plants.html](https://bewaterwise.com/california-native-plants.html)